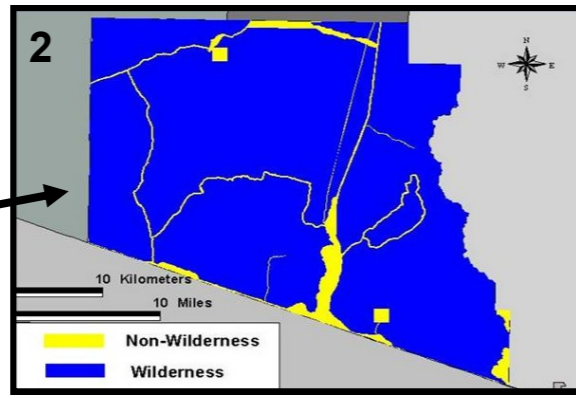
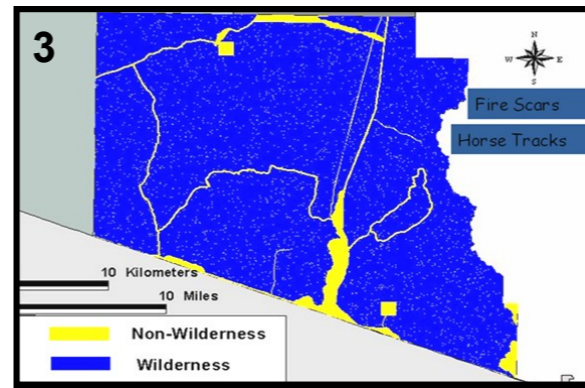


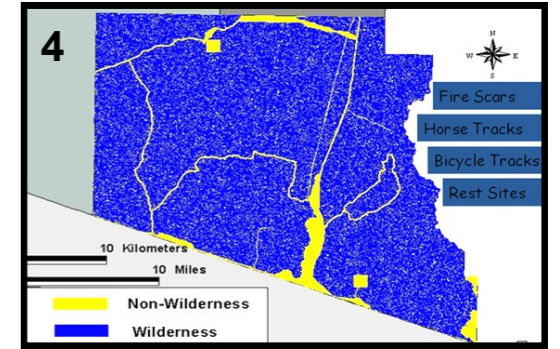
This is the location of the Organ Pipe Cactus Monument in Arizona which was designated a federal wilderness area in 1978. The park shares 32 miles of the US border with Mexico.



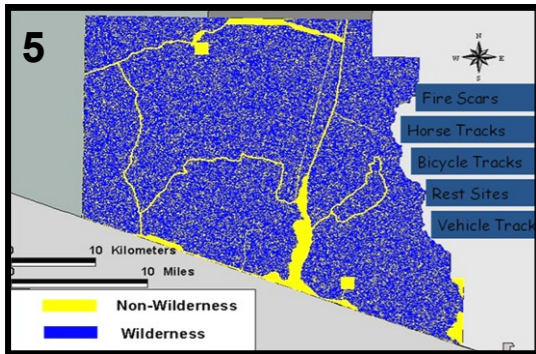
Here is the monument with the wilderness area in blue and the non-wilderness area in yellow. The following pictures are a series of overlays, taken from a presentation from the National Park Service.



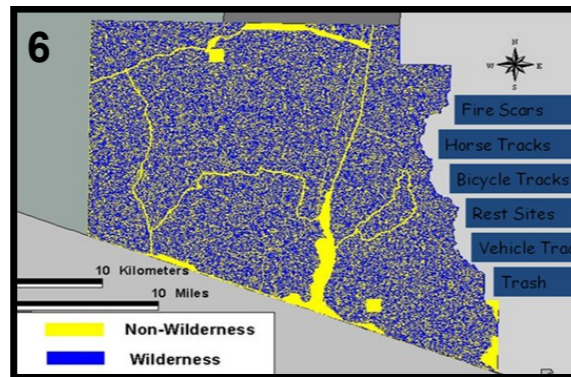
Look closely at the small dots. These indicate the remnants of campfires started by illegals and horse tracks left by drug cartels making their way across the monument. Notice they are all in the federally protected wilderness area.



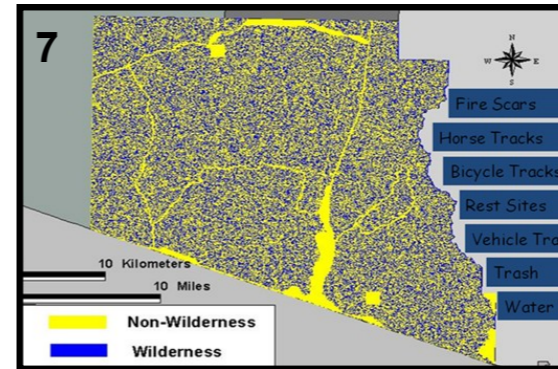
Now bicycle tracks and rest areas are added. Bicycles are considered mechanized equipment and are not allowed in wilderness areas. These rest areas are not those provided by the park with picnic tables and restrooms.



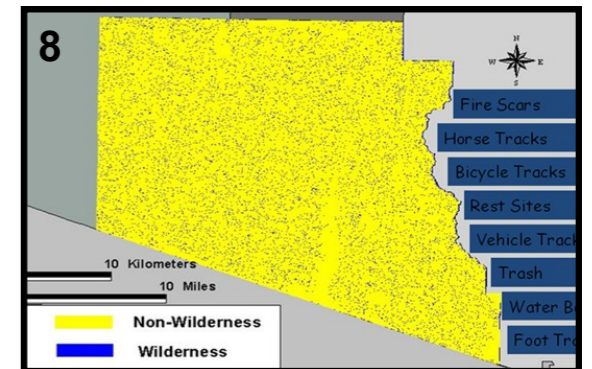
Look at the devastation to the land when vehicle tracks are added. Federal law prohibits any motorized vehicle in a designated area.



Tons and tons of human waste and trash, excluding water bottles, are now added.



Water bottles are added to the trash.



When foot trails are added, you can see that the federally monitored and regulated wilderness has been totally desecrated. The only areas that have been preserved are the non-wilderness parts of the monument.

The Border Patrol is only allowed unrestricted access in the non-wilderness area.

**This happened in Arizona.
Don't let it happen in New Mexico!**