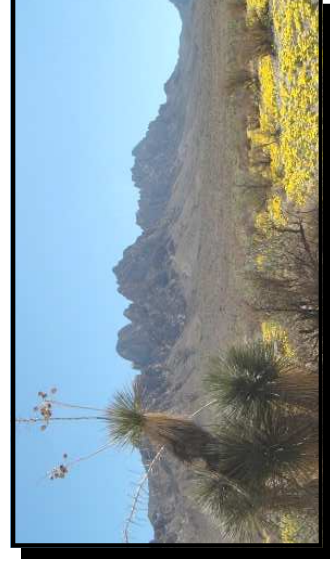


Protect our ORGAN MOUNTAINS

A threat to national security: One only needs to look at the border issues that have besieged Arizona's Organ Pipe Cactus National Monument to realize that creating a wilderness or a national monument on our southern New Mexico border is not a good idea. Portions of Organ Pipe Cactus National Monument have been closed to the public because of the illegal drug and human smuggling activity. And on rare occasions when tourists are allowed to hike into those areas, it is only with an armed guard escort. Warning signs are prevalent throughout the area.



The destruction of the environment by illegals is overwhelming and costly. Our generation will never see nature's recovery from the damage of forged trails and roads from illegal activity in the Organ Pipe Cactus National Monument.

Drug and human smuggling cartels know that law enforcement and border security is limited in national monuments and denied in wilderness areas. Creating either along the southern border of Doña Ana County guarantees the perfect smuggling corridor.

Let's protect our beloved Organ Mountains. But let's not allow the federal government to put even more restrictions on public lands in the rest of our county.

**Support Congressman Pearce
H.R. 4334: "Organ Mountains National
Monument Establishment Act."**

Mesilla Valley TEA Party
www.mesillavalleyteaparty.org

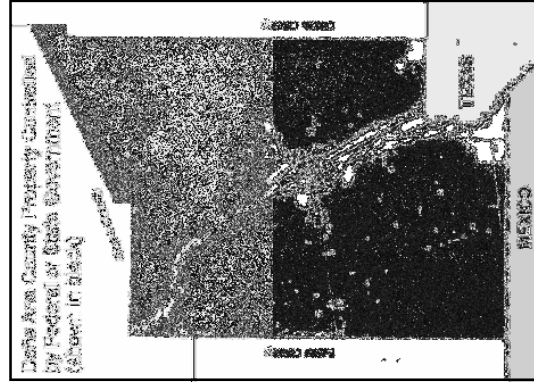
"Boots on the Ground Supporting Conservatives"

Everyone wants to protect the Organ Mountains. They are the landmark that visitors remember after their journey through the Mesilla Valley. They are etched in the memories of those who have grown up in their presence. Their majestic peaks have a magnetism that beckons wanderers to return to their roots.

H.R. 4334 "Organ Mountains National Monument Establishment Act" will insure that their beauty and charm will remain unscarred for future generations to enjoy.

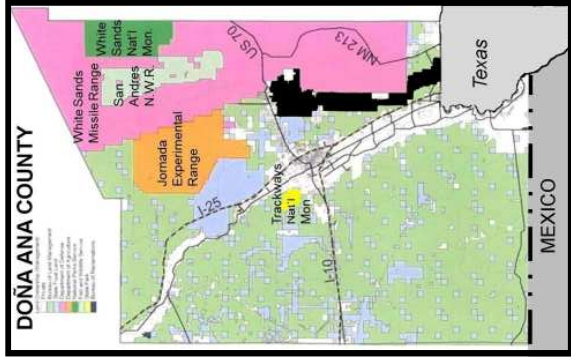
But do we need to create a national monument out of the western part of the county? Nearly 75% of Doña Ana County is federally owned land and 30% of that is restricted, i.e., White Sands Missile Range, White Sands National Monument, San Andres National Wildlife Refuge, and Jornada Experimental Range. And almost half of the federally owned land in the county is multi-use BLM land and is **already protected!**

Senator Bingaman's bill and the Wilderness Alliance proposal will convert nearly 50% of that into highly restricted wilderness or national monument.



Less than 15% of Doña Ana County is privately owned property! (shown in white)

Congressman Pearce's Proposal:
H.R. 4334 "Organ Mountains
National Monument Establishment
Act" (shown in black)



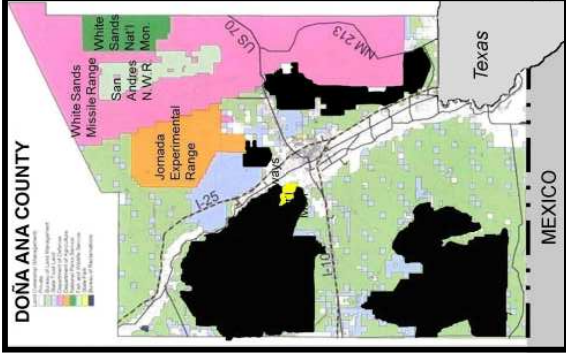
National Monument...
"shall be confined to the smallest area..."

SIZE: 58,512 acres or 91 sq. miles
2% of Doña Ana County

Areas included: Organ Mountains

Threat to border security	NO
Fits definition of smuggling corridor	NO
Supported by National Association of Former Border Patrol Officers	YES
Protects water & grazing rights	YES
Motorized vehicles on designated roads	YES
Created by legislative process allowing public input	YES

Wilderness Alliance Proposal: "Organ Mountains-Desert Peaks National Monument" (shown in black)



SIZE: 600,000 acres or 938 sq. miles

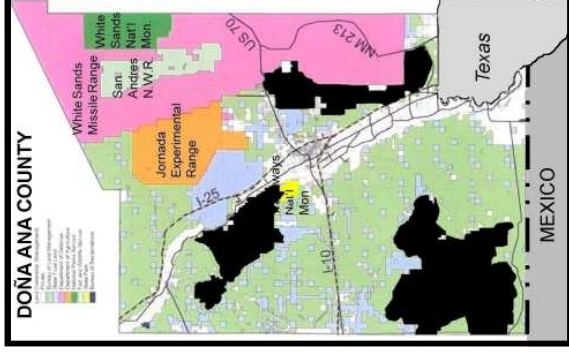
25% of Doña Ana County

Areas included: Organ Mountains PLUS
Aden Lava Flow
Sierra de Las Uvas Mts
East Potrillo Mts
Robledo Mountains
West Potrillo Mts
Broad Canyon
Mt. Riley
Sleeping Lady Hills
Aden Crater
Rough and Ready Hills
Kilbourne Hole
Magdalena Peak
Providence Cone
Doña Ana Mts

Threat to border security	YES
Fits definition of smuggling corridor	YES
Supported by National Association of Former Border Patrol Officers	NO
Protects water & grazing rights	Probably NOT
Motorized vehicles on designated roads	Probably NOT
Created by legislative process allowing public input	NO

Senator Bingaman's Proposal:
S1024 "Organ Mountains-Doña Ana County Conservation and Protection Act" (shown in black)

BLM land is already protected!
Nearly 50% of multi-use BLM land will be turned into wilderness or national monument!



SIZE: 241,000 acres wilderness + 75,000 acres of National Conservation Area or 495 sq. miles

13% of Doña Ana County

Areas included: Organ Mountains PLUS

Aden Lava Flow
Sierra de Las Uvas Mts
East Potrillo Mts
Robledo Mountains
West Potrillo Mts
Broad Canyon
Cinder Cone

Threat to border security	YES
Fits definition of smuggling corridor	YES
Supported by National Association of Former Border Patrol Officers	NO
Protects water & grazing rights	NO
Motorized vehicles on designated roads	NO
Created by legislative process allowing public input	YES